

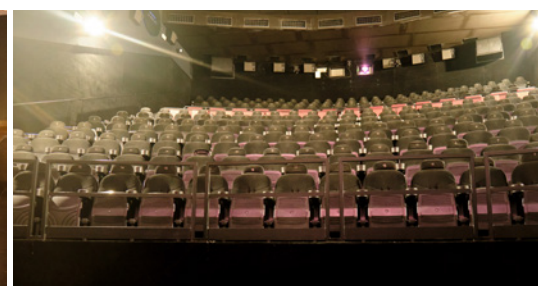
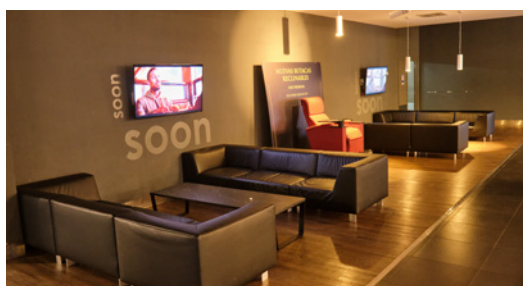


TECHNICAL INFORMATION

SCREEN	CAPACITY	SCREEN SIZE (m)	DISTANCE FROM FRONT ROW TO SCREEN (m)
SCREEN 1	140 ♿ 2	10,34x6,90	4,53 / 2,53
SCREEN 2	39 ♿ 1	6,89x3,51	3,37
SCREEN 3	132 ♿ 2	10,26x6,80	2,3
SCREEN 4	39 ♿ 1	6,99x3,51	3,26
SCREEN 5	35 ♿ 1	8,36x3,74	3,02
SCREEN 6	161 ♿ 2	11,40x7,63	4,67
SCREEN 7	163 ♿ 2	12,31x8,00	4,46
SCREEN 8	50 ♿ 1	8,29x3,98	5,11
SCREEN 9	250 ♿ 3	14,27x8,11	6,2
SCREEN 10	49 ♿ 1	8,70x4,62	5,11
SCREEN 11	252 ♿ 3	14,30x8,11	5,72 / 3,90
SCREEN 12	256 ♿ 3	14,32x8,11	5,74 / 3,93
SCREEN 13	50 ♿ 1	9,97x4,32	4,9
SCREEN 14	232 ♿ 3	14,41x8,11	4,9
SCREEN 15	48 ♿ 1	9,93x4,95	4,8
SCREEN 16	134 ♿ 3	10,35x6,90	4,44 / 2,55
SCREEN 17	142 ♿ 2	10,43x6,96	4,70 / 3,67
SCREEN 18	124 ♿ 3	14,40x8,00	5,73 / 4,14
SCREEN 19	44 ♿ 1	8,00x4,25	3,12
SCREEN 20	37 ♿ 1	7,80x4,21	2,97
SCREEN 21	29 ♿ 1	7,79x3,95	3,43
SCREEN 22	35 ♿ 1	8,85x4,75	3,21
SCREEN 23	42 ♿ 1	8,70x4,65	2,7
SCREEN 24	38 ♿ 1	8,83x4,75	4,71
SCREEN 25	38 ♿ 1	8,83x4,75	4,89
SCREEN 26	28 ♿ 1	7,80x4,25	3,47
SCREEN 27	40 ♿ 1	10,75x5,75	2,2
SCREEN 28	38 ♿ 1	10,58x5,82	3,02

SIZE AND CAPACITY OF RECEPTION SPACES

SPACES	SIZE (m²)	STANDING CAPACITY	SEATED CAPACITY
GAUDI	270	250	125
LOUNGE	200	180	90
GROUND FLOOR	280	260	130
GROUND FLOOR CORNER	140	125	60





GENERAL INFORMATION

VENUE HOURS AND STAFFING

- **Set up hours** are from 06:00 to 22:00.
- The venue's **staffing assistants** will facilitate access to screens and spaces as well as cargo lifts. Security personnel for the event will be contracted separately.
- Kinopolis has its own dedicated venue **maintenance staff**. If a maintenance employee is required for the duration of the event, please enquire about rates.
- Kinopolis has a list of **preferred providers** for **catering** and **audio-visual services**. Your sales representative can provide you with the contact details.

ADDITIONAL SERVICES

Kinopolis offers:

- **SECURITY PERSONNEL** (guards and assistants), attendants, maintenance staff, etc. Request a quote based on the requirements of your event.
- **ADDITIONAL FURNITURE** for events: decorative poufs, sofas, coffee tables, room dividers, queue barriers, etc. Enquire about availability and rates.
- **CLOAKROOM**. Enquire about availability and rates.
- **INTERNET CONNECTION**. Free WIFI can be set up according to the requirements of your event using network cables or symmetrical WIFI from 1Mb up to 50Mb. Available in auditoriums and communal spaces. Request a quote based on your requirements.
- **STOREROOMS** and back-office space up to 20m².
- **REPROGRAPHY** service.
- **FREE PARKING** up to 3,000 spaces. Option to reserve spaces for events: VIP guests, busses, etc.





BASIC TECHNICAL SET-UP INFORMATION



OFFLOADING OF MATERIAL

- Cabin lift with 800 kg capacity from ground floor to second floor
 - Door width : 110 cm.
 - Cabin width: 160 cm.
 - Door height: 210 cm.
 - Alto Interior cabina: 220 cm.
 - Fondo: 115 cm.



ELECTRICAL POWER

- **We have 28 SCHUKO 16A, 220V single-phase power points located in the hall and passageways.**
 - Option to fit sub-panel for auditorium with a maximum of 40A for events.
 - Option to obtain 63A power from the general panel (upper cabin).

EXTRAS

SPECIAL REQUIREMENTS

- ELECTRICAL FITTINGS:

Electrical work is carried out by competent and qualified personnel. After installation, a certificate is issued confirming that all work has been done in accordance with project requirements.

A certificate of compliance is issued by the electrician.

- STRUCTURES (Canopies, pergolas, platforms, etc.)

All assembly work is carried out by competent and qualified personnel who review maximum permissible loads, fittings, wind resistance, etc. After installation, a certificate is issued confirming that all work has been done in accordance with project requirements.

- WORK-RELATED RISK PREVENTION:

If any work carried out modifies the active or passive safety installations for fire prevention, evacuation routes, etc, an emergency plan specific to the event must be created.

Formalisation of prevention procedures.

- PERMITS:

For special events or set-ups in outdoor spaces, the client will be responsible for obtaining the applicable permits from the City Council or other bodies/institutions.



BASIC TECHNICAL INFORMATION FOR PROJECTION

VIDEO AND AUDIO INPUTS

VIDEO:

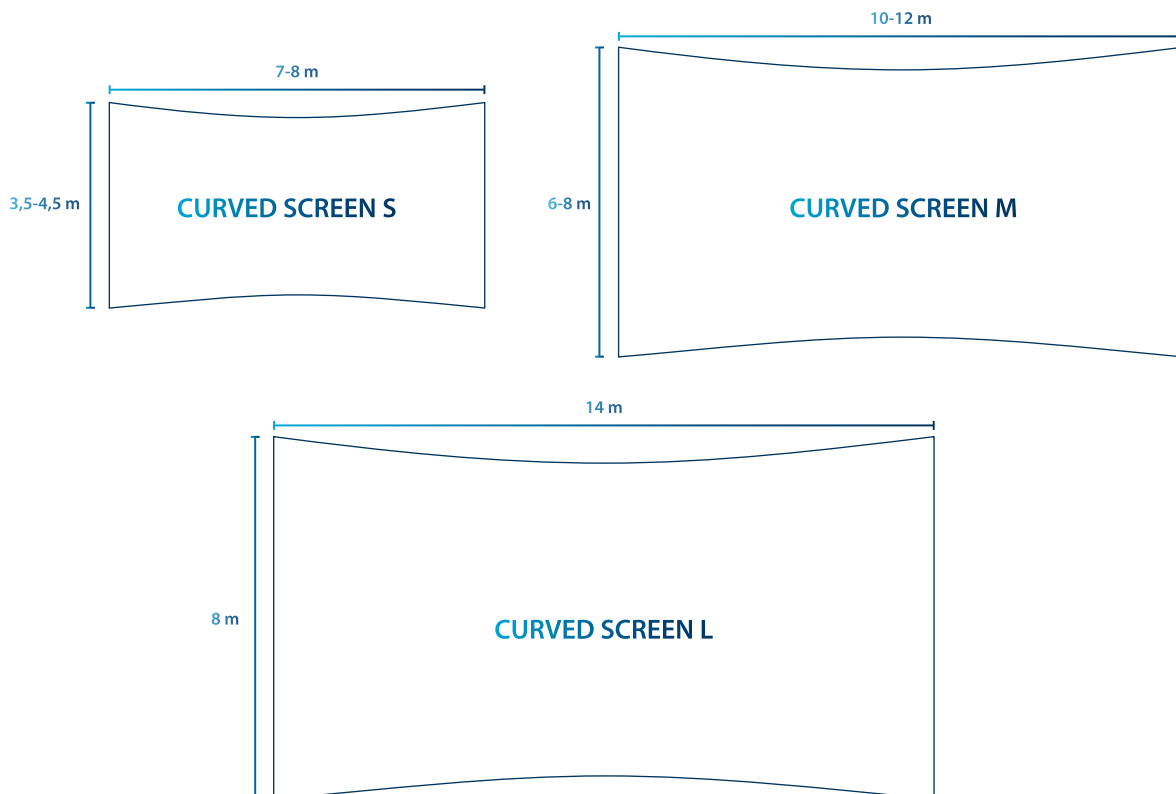
- DVI inputs for all projectors with maximum 2K resolution (2048 x 1080).

EXTERNAL AUDIO:

- L and R stereo screen channels (RCA).
- Mono XLR input for microphones with option to send to screen C channel or auditorium side channels.
- Direct signal to room sound rack. (Always to audio processor, not directly to amplifier).

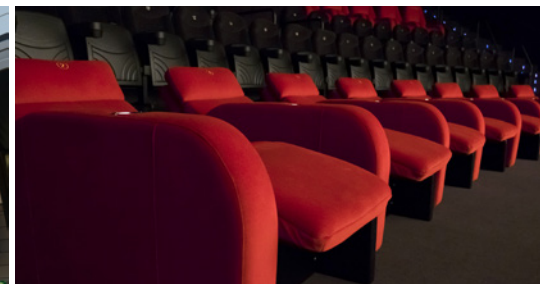
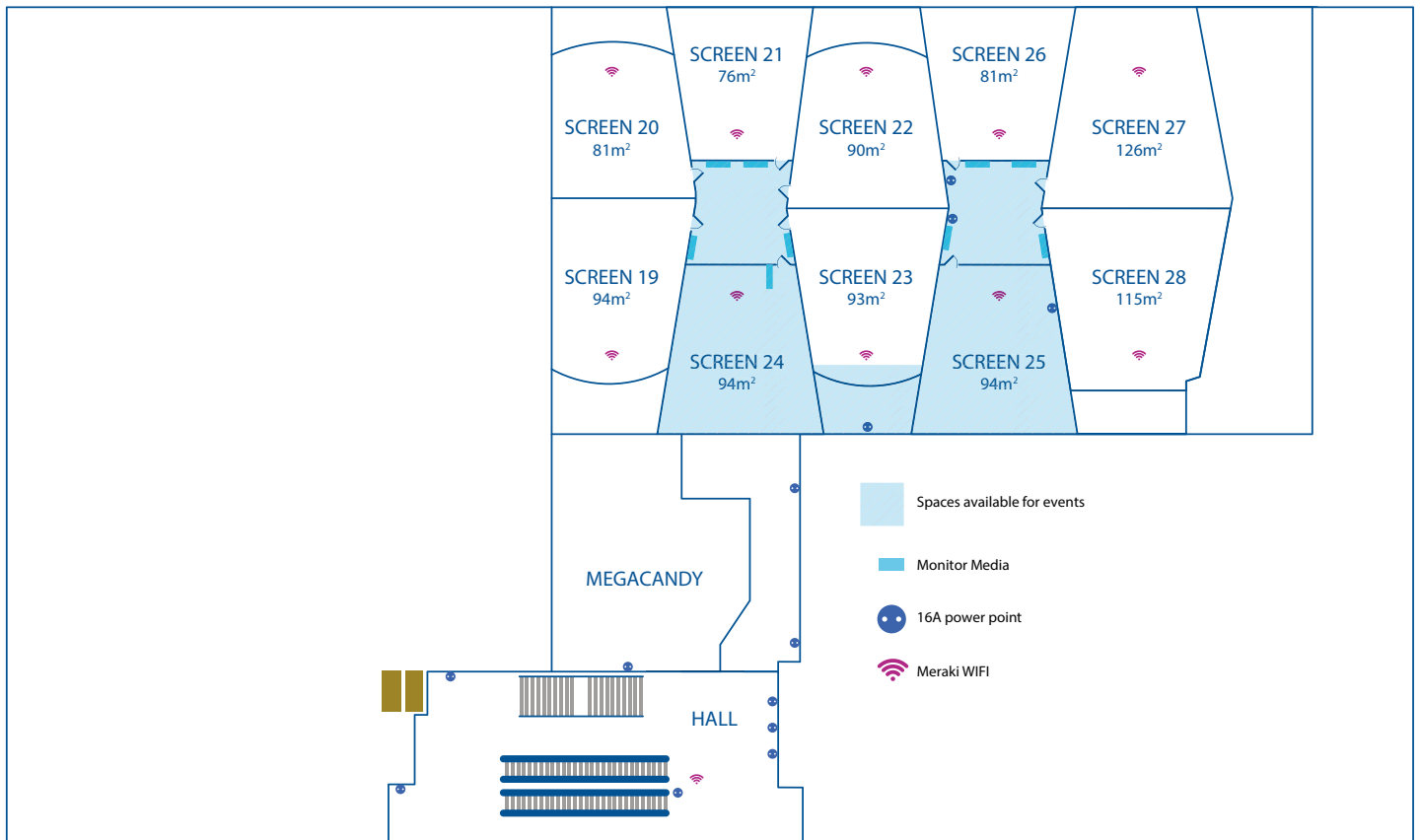
PROJECTION

- Barco 2K and 4K digital projectors (laser illuminated).
- Christie 2K and 4K digital projectors (xenon gas lamp-based illuminated).
- 3D screens: 7, 9, 11, 16, 18, 20, 22, 27, 28. Active 3D Eyes3Shut system.
- Curved screen in every auditorium.



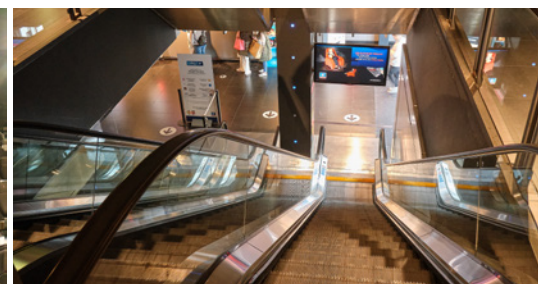
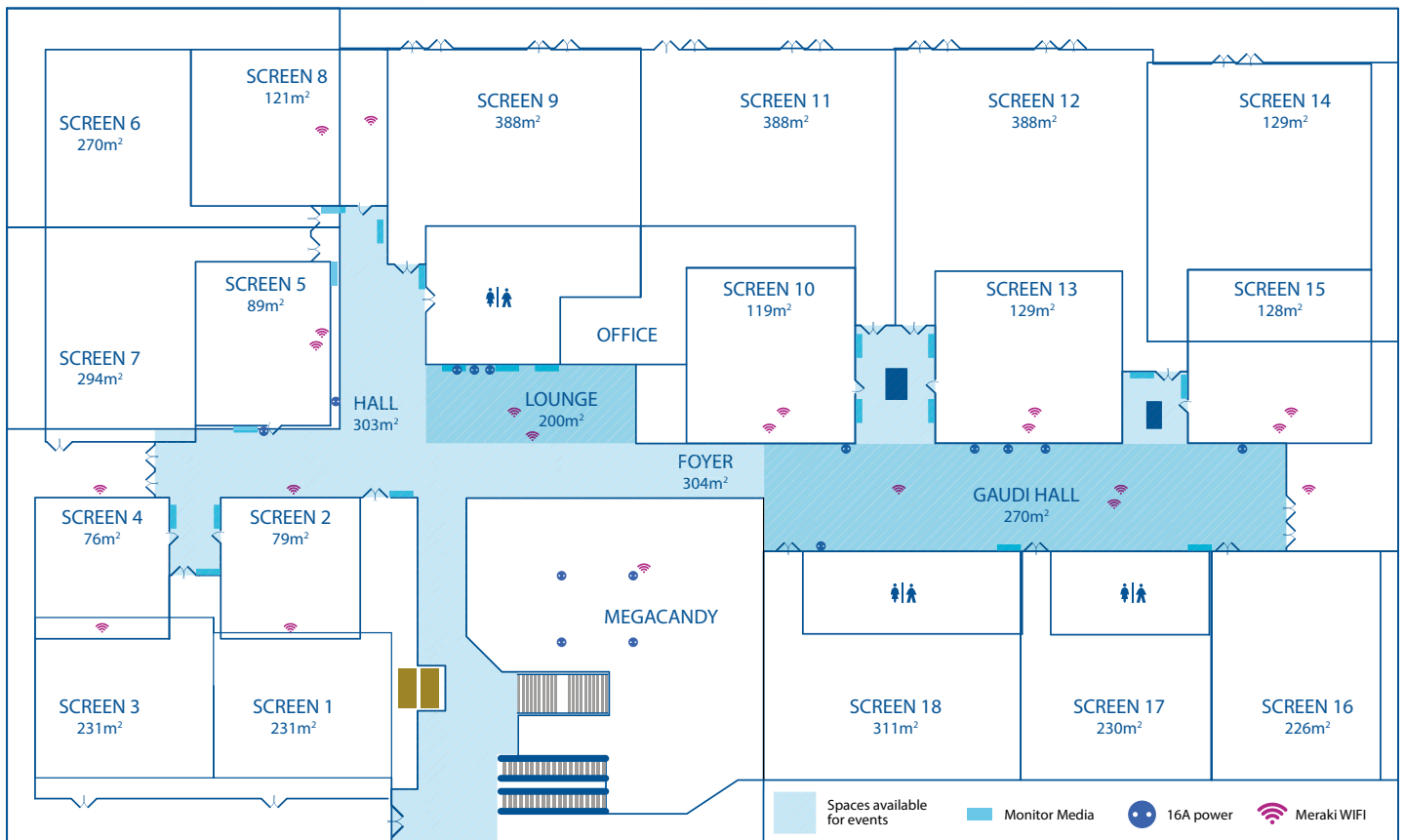


FLOORPLAN GROUND FLOOR



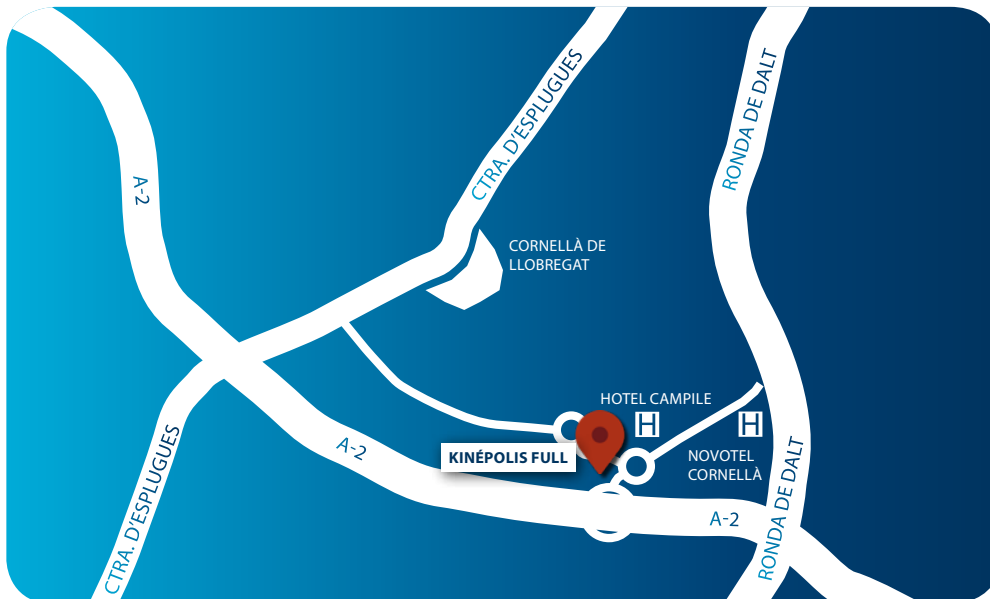


FLOORPLAN FIRST FLOOR



EASY ACCESS FOR GETTING TO YOUR EVENT

Our venue has ample free parking space and easy access to facilitate the arrival of your guests.



VEHICLE ACCESS:

- Parking at Centro Comercial Splau: the parking area has 2,800 free underground parking spaces as well as charging points for electric vehicles.



SUGGESTED ACCOMMODATION:

Hotel Campanile Barcelona Cornellà-Sud

Avinguda Maresme, 7.

08940 Cornellà de Llobregat

Reservation: 900 802 901

Telephone: +34 933 772101

barcelona.cornella@campanile.com

Novotel Barcelona Cornellà

Avinguda del Maresme-Barcelona Barcelona ES,

Ronda de Dalt, 78, Salida 15, 08940 Hb004163

Telephone: +34 934 74 70 00

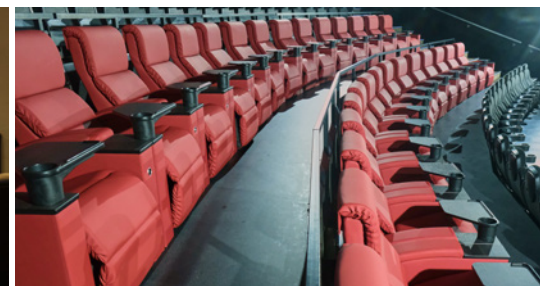


TRANSPORTE PÚBLICO:

- Metro: L5 and L8
- Train: R4, R5, S3 and S8



- Bus: 67, 68, 95



STAR EVENTS

Contact telephone number: 91 512 70 13

Kinépolis Ciudad de la Imagen (Pozuelo) • Kinépolis Diversia (Alcobendas) • Kinépolis Valencia
Kinépolis Plaza Mar 2 (Alicante) • Kinépolis Granada • Kinépolis Nevada • Kinépolis Full (Barcelona)
Kinépolis Mataró • Kinépolis La Cañada (Marbella)