



TECHNICAL INFORMATION

SCREEN	CAPACITY	SCREEN SIZE (m)	DISTANCE SCREEN TO BOX (m)	SCREEN TO FRONT ROW (m)
SCREEN 1	207 6	14x6	22,5	6,5
SCREEN 2	339 8	17x7	28,5	7,5
SCREEN 3	414 10	20x8	34,5	11,5
SCREEN 4	414 10	20x8	34,5	11,5
SCREEN 5	339 8	17x7	28,5	7,5
SCREEN 6	207 6	14x6	22,5	6,5
SCREEN 7	207 6	14x6	22,5	6,5
SCREEN 8	339 8	17x7	28,5	7,5
SCREEN 9	207 6	14x6	22,5	6,5
SCREEN 10	207 6	14x6	22,5	6,5
SCREEN 11	339 8	17x7	28,5	7,5
SCREEN 12	414 10	20x8	34,5	11,5
SCREEN 13	414 10	20x8	34,5	11,5
SCREEN 14	339 8	17x7	28,5	7,5
SCREEN 15	207 6	14x6	22,5	6,5

RECEPTION SPACES: SIZE AND CAPACITY

SPACE	SIZE (m ²)	CAPACITY (STANDING)	CAPACITY (SEATED)
HALLS	1.800	1.400	800
CATERING	450	400	250
LOUNGE	100	90	50



GENERAL INFORMATION



COMPLEX TIMETABLE AND STAFF

- **Set-up times** from 7am to 11 pm.
- The **security staff** in the complex will provide access to rooms, spaces and to service lifts. The specific security staff for the event are hired separately.
- Kinépolis has its own **maintenance staff** in the complex. Should you require a maintenance person during the event, please request a quote.
- Kinépolis has a number of **service providers** both for **Catering** and **Audiovisual Services**. The Kinépolis sales representative can provide you with their contact details.



ADDITIONAL SERVICES

Kinépolis can provide:

- **Security STAFF** (security guards and assistants), hosts and hostesses, maintenance staff, etc. Request a quote specific to your event requirements.
- **EXTRA FURNITURE** for events: decorative pouffes, couches, low tables, folding screens, overhead power cables, etc. Consult availability and price.
- **CLOAKROOM**. Consult availability and price.
- **INTERNET CONNECTION** customised to your event requirements: cables or Wi-Fi, from 1MB to 20MB, symmetrical both in spaces and rooms. Request a quote specific to your requirements.
- **WAREHOUSES and Technical Office Space**, of up to 20m².
- **REPROGRAPHY** service.
- **FREE PARKING** up to 2,200 spaces. Possibility of reserving places for events: VIP guests, buses, etc.



BASIC TECHNICAL INFORMATION FOR SET-UP



UNLOADING MATERIAL

- Service lift for up to 975 Kg. to access projection booth floor to set up audiovisual equipment.



POWER POINTS

CINEMA FLOOR:

● CORRIDORS:

- 1 four pole 380/220V 63A socket.
- 2 380/220V 32A sockets.

● HALL:

- 1 four pole 380/220V 63A socket.
- 1 380/220V 32A socket.



SPECIAL REQUIREMENTS

● ELECTRICAL INSTALLATIONS:

Electrical installation performed by competent and qualified staff, who upon completion of the installation issue a certificate indicating that the set-up has been performed in accordance with the project.

Electrical report from the electrician who performs the installation.

● STRUCTURES (Marquees, pergolas, platforms...)

Project performed by competent and qualified staff who consider the maximum permissible load, anchorage, wind resistance, etc. When the installation is complete the staff will issue a certificate indicating that the set-up has been performed in accordance with the project.

● SELF-PROTECTION PLAN:

If the installations modify the active or passive fire safety installations, evacuation routes, etc., a specific self-protection plan must be put in place for the event.

● PERMITS:

For special actions and the set-up of events in outdoor areas, the client is responsible for processing the relevant permits with the city council or other organisations/institutions.



THE CONTRACTING AGENCY/CLIENT MUST TAKE OUT THIRD PARTY LIABILITY INSURANCE

BASIC TECHNICAL INFORMATION FOR PROJECTION

VIDEO AND AUDIO INPUTS

VIDEO:

- DVI – In all rooms.

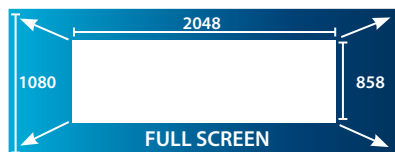
EXTERNAL AUDIO INPUTS:

- Stereo L & R (Canon XLR RCA).
- Possibility of 5.1 loom (9 channels through the mixing table).

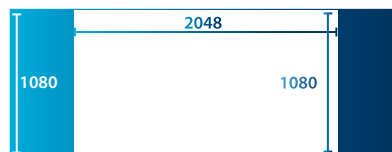
PROJECTION

- Barco 2K, 4K digital projection (room 12, room 3).
- Cinema screen format: 21/09.
- 3D rooms: 10, 11.

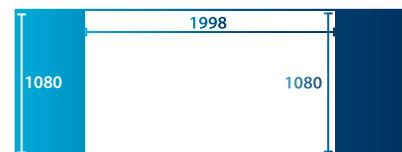
FORMATS



SCOPE (2048 X 858)



FULL 2K (2048 X 1080)



FLAT (1998 x 1080)

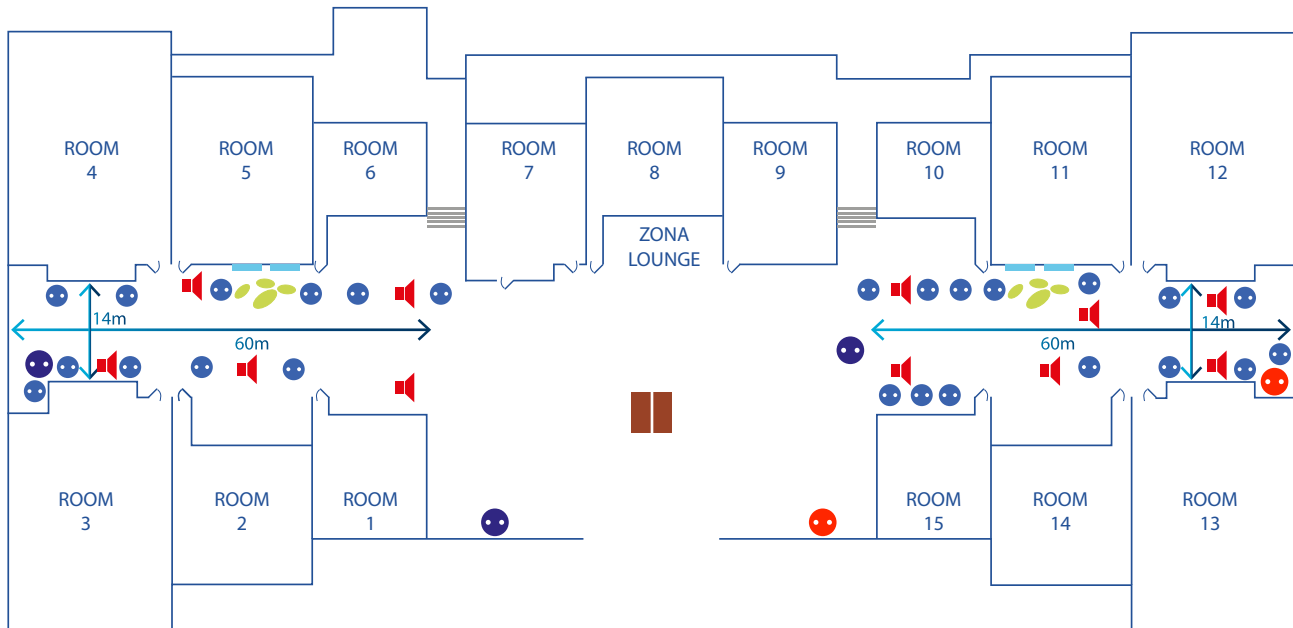


FULL HD (1920 x 1080)





HD to complete the screen (1920 x 804)

BASIC TECHNICAL INFORMATION FOR SET-UP



CINEMA FLOOR:

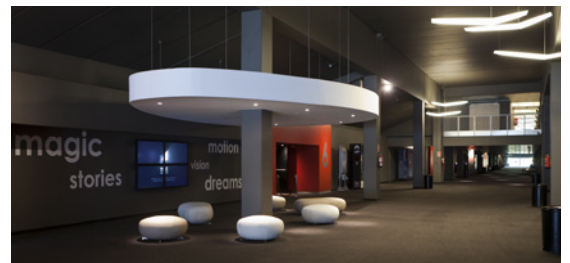
-  ● 2 four pole 380/220V 63A sockets.
-  ● 3 380/220V 32A sockets.

CORRIDORS

 1.800m²

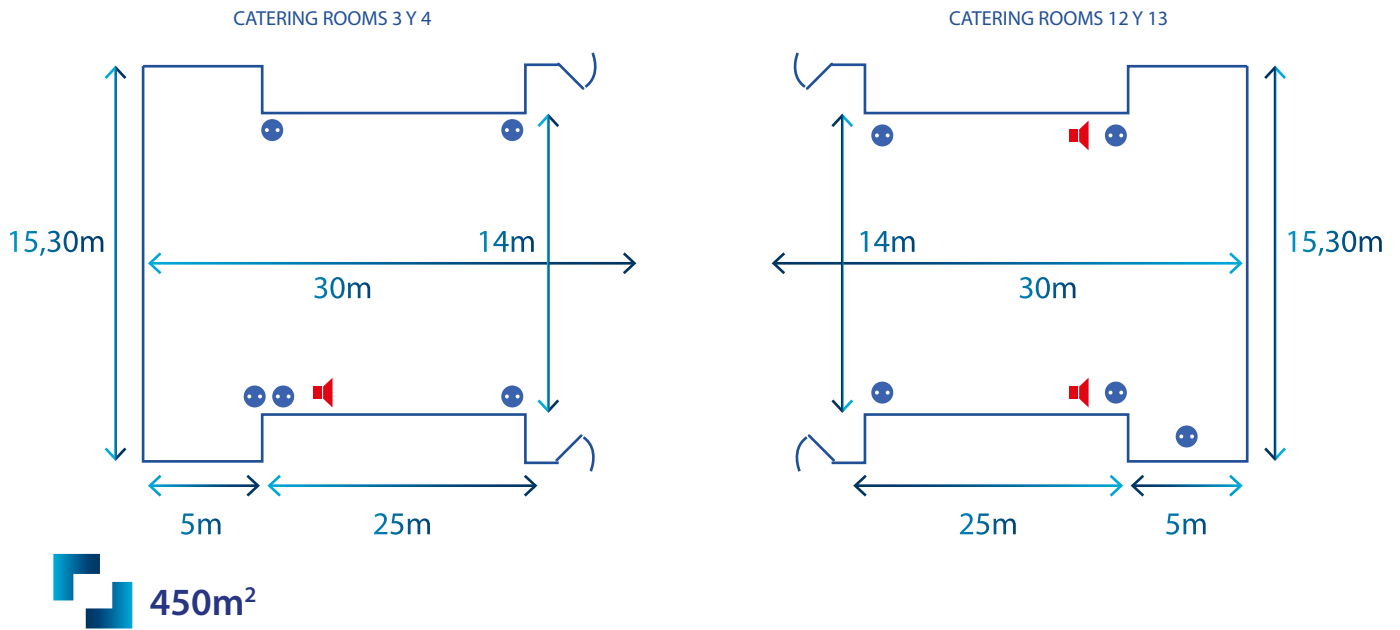
SERVICE LIFT

-  ● Can carry up to 975 Kg

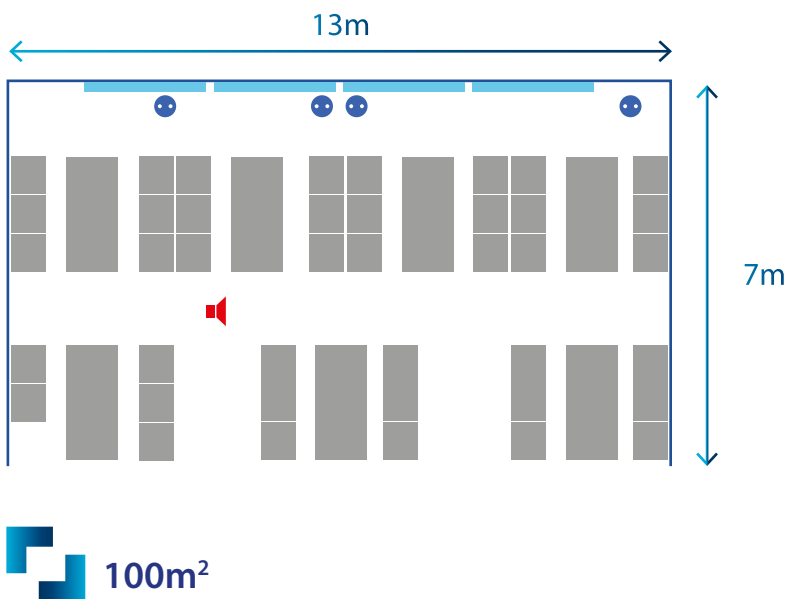


 Speaker  Socket  47" screen

CATERING PLAN



LOUNGE PLAN



Speaker Socket 47" screen