



TECHNICAL INFORMATION

SCREEN	CAPACITY	SCREEN SIZE (m)	DISTANCE SCREEN TO BOX (m)	SCREEN TO FRONT ROW (m)
SCREEN 1	119 2	4,87x9,17	15,72	3,65
SCREEN 2	156 2	5,44x10,18	18,38	3,91
SCREEN 3	346 2	8,22x15,86	26,39	6,67
SCREEN 4	323 2	8,27x15,90	25,20	6,67
SCREEN 5	227 2	6,27x11,77	22,13	4,91
SCREEN 6	563 2	12,16x21,78	32,35	9,43
SCREEN 7	76 2	4,06x7,64	13,96	3,03
SCREEN 8	118 2	4,66x8,60	18,30	3,03
SCREEN 9	369 2	8,62x15,86	27,57	6,78
SCREEN 10	300 2	7,98x15,93	24,39	7,03
SCREEN 11	156 2	5,60x10,12	18,28	3,85
SCREEN 12	119 2	5,25x9,22	16,20	3,79

RECEPTION SPACES: SIZE AND CAPACITY

SPACE	SIZE (m ²)	CAPACITY (STANDING)	CAPACITY (SEATED)
LOUNGE	600 - 810	600	400
CORNER	70	60	30





GENERAL INFORMATION



COMPLEX OPENING TIMES AND STAFF

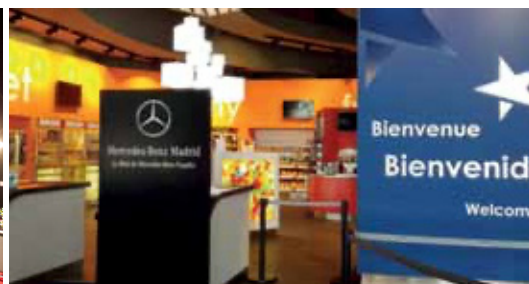
- Assembly time from 7.00 am to 10 pm.
- Support staff at the complex will provide access to the screens and spaces. Security staff specific to an event will be contracted separately.
- Kinépolis has its own maintenance staff at the complex. If maintenance workers are required for an event, the client should request a quote for this service.
- Kinépolis has various preferred suppliers for catering and audiovisual services, graphics and rental of furniture. Our sales representative can provide their contact details.



ADDITIONAL SERVICES

Kinépolis can provide:

- STAFF: security, hostesses, maintenance etc. Request a quote applicable to the needs of your event.
- EXTRA FURNITURE for events: decorative pouffes, sofas, low tables, screens, post and rope stanchions, etc. Check availability and price.
- CLOAKROOM. Check availability and price.
- INTERNET CONNECTION customised to the needs of your event: cable or Wifi, from 1MB to 20MB symmetrical speed in communal areas and screens. Request a budget according to your needs.
- REPROGRAPHY service.
- PARKING.





BASIC TECHNICAL INFORMATION: PROJECTION

VIDEO AND AUDIO INPUT

VIDEO:

- Single-line/dual-link DVI - in all screens, progressive and interlaced, maximum resolution 2K.
- HDMI in all screens, progressive scanning only up to max. 1080p 29.97/30 Hz
- Other input type using converter may be possible.

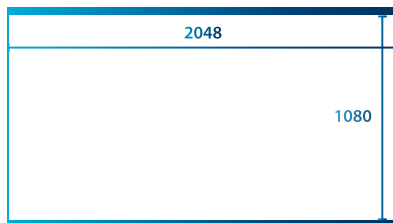
EXTERNAL AUDIO OUTPUT:

- RCA for L/R stereo.
- Mono microphone signal through XLR.
- Option of 5.1 cable (XLR female connector, max. 6 analogue channels).

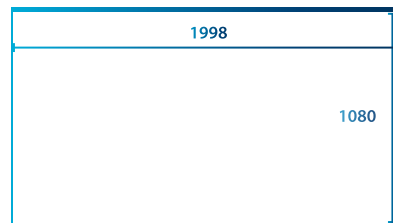
PROJECTION

- Barco digital projectors, 2K and 4K (SCREEN 6).
- 16:9 flat widescreen.
- 3D Screens: 2 and 10 (silver screens). Master image WAVE 3D system (liquid crystal polarisation modulator) and Master Image Horizon 3D S (three-beam optical system).

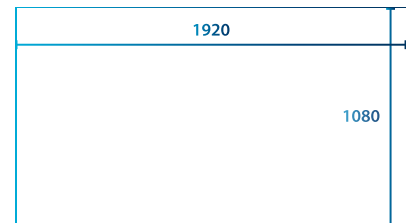
FORMATS



FULL 2K (2048 X 1080)



FLAT 2K (1998 x 1080)



FULL HD (1920 x 1080)

EXTRAS SPECIAL REQUIREMENTS

ELECTRICAL INSTALLATIONS:

An electrical supply design is required from competent, certified professionals who issue a certificate after installation confirming that the assembly has been performed in accordance with the design.

An electrical report by the electrician who performs the installation is also required.

STRUCTURES (marquees, awnings, platforms, etc.)

A project design must be prepared by a competent, certified professional who assesses maximum permissible loads, anchorage, wind resistance, etc. The professional must issue a certificate when the installation has been completed confirming that assembly has been performed in accordance with the design.

OCCUPATIONAL HEALTH AND SAFETY:

If the installation alters the active or passive safety measures for fires, evacuation routes etc., a specific safety plan must be prepared for the event.

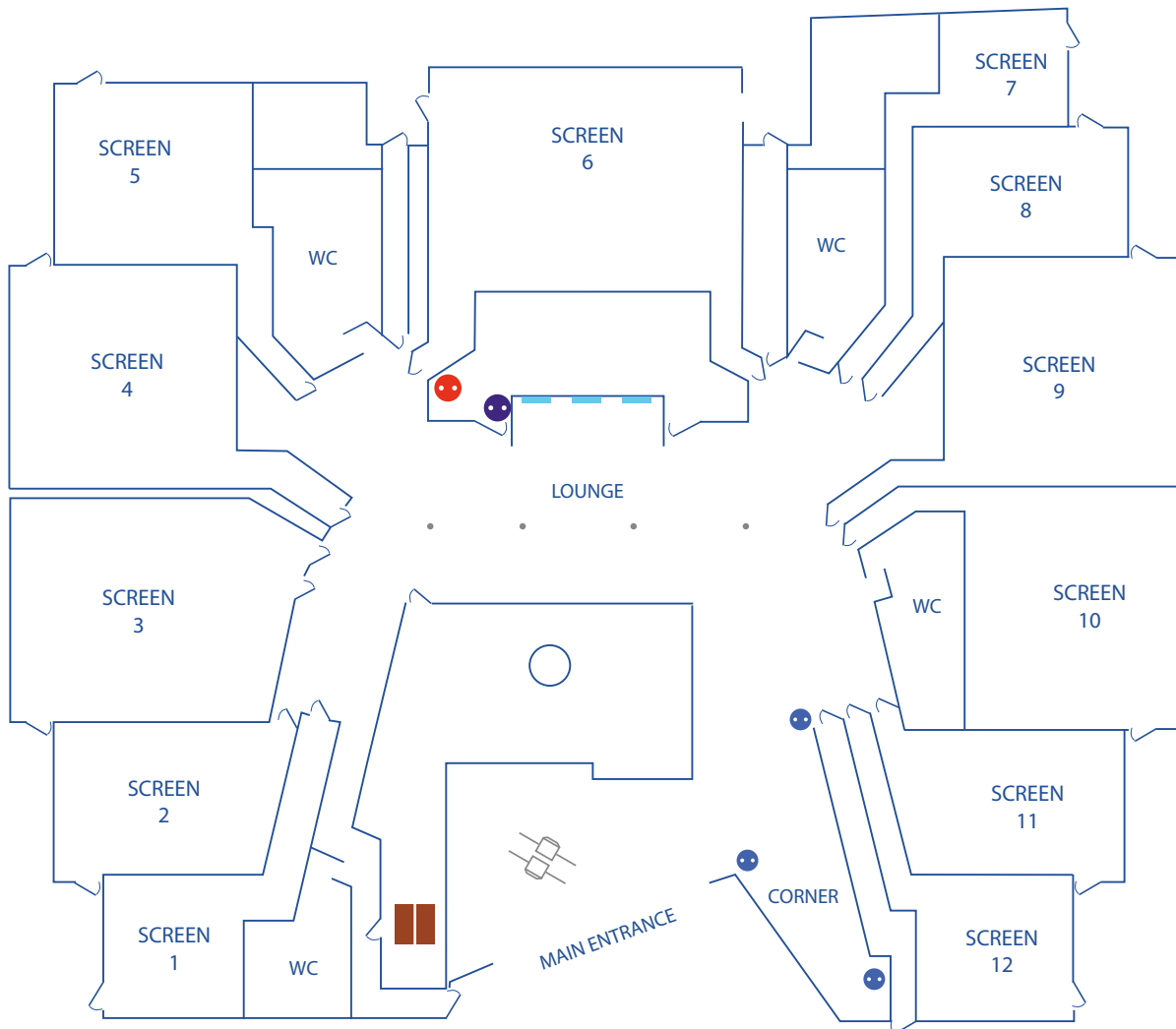
Formalization of health and safety processes.

PERMITS:



In the case of special activities and assembly for outdoor events, the client is responsible for obtaining the necessary permits from the Town Hall or relevant bodies/institutions.



BASIC TECHNICAL INFORMATION: ASSEMBLY




SCREEN FLOOR

-  ● 1 32A four pole socket 380/220V.
-  ● 1 20A socket 380/220V.

GOODS LIFT

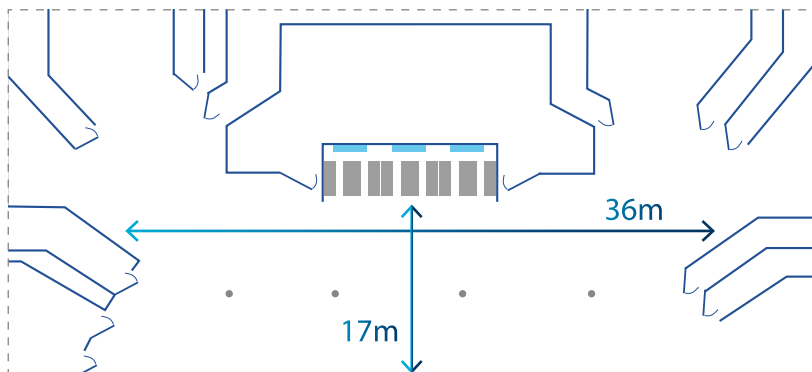
-  ● Transports up to 1,500 kg.



 42" monitor



LOUNGE

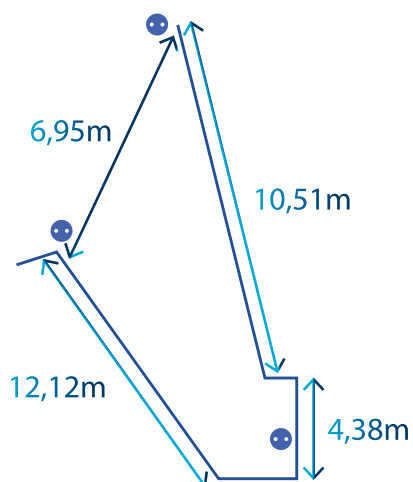


42" monitor



 600m² / can be expanded to 810m²

CORNER PLAN



 70m²

Socket

